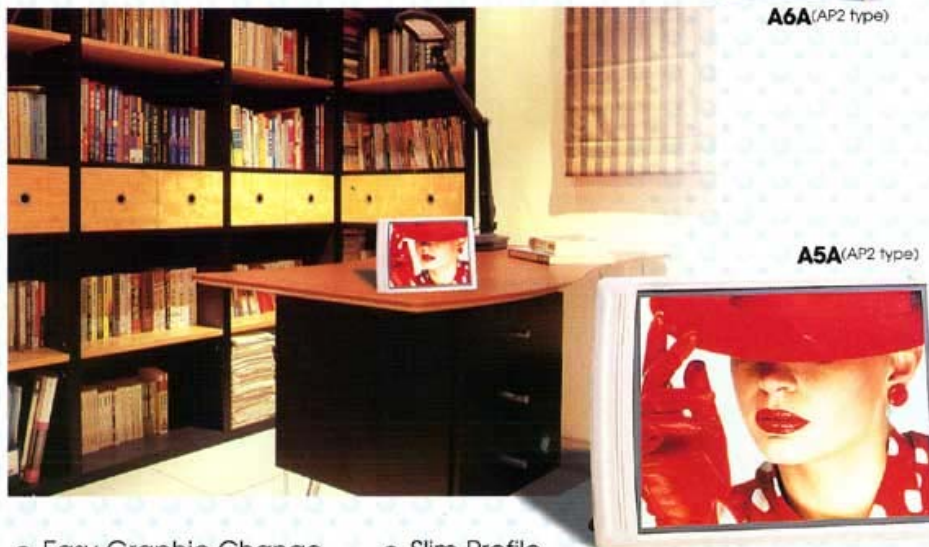
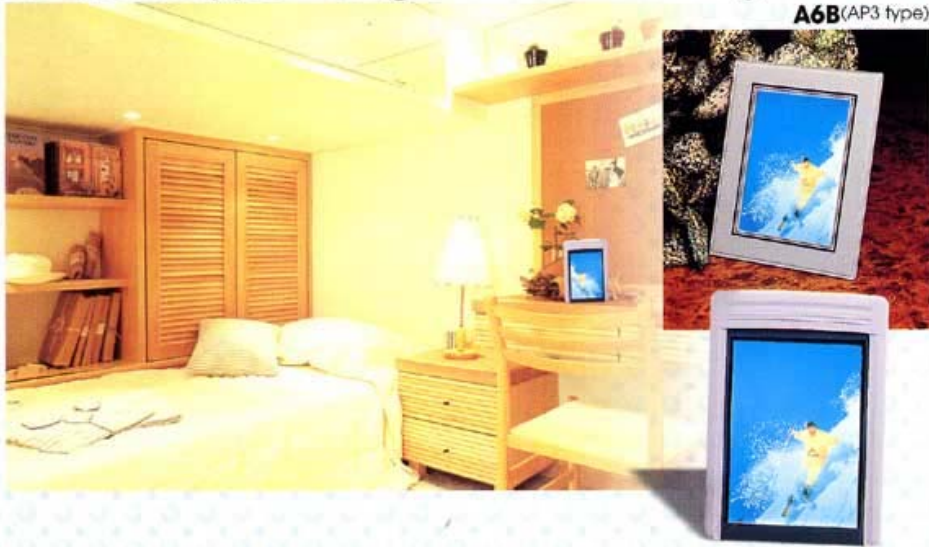


Edge Light Sign Board

The most effective advertisement display

AP2/AP3 Type - Single Sided Viewing



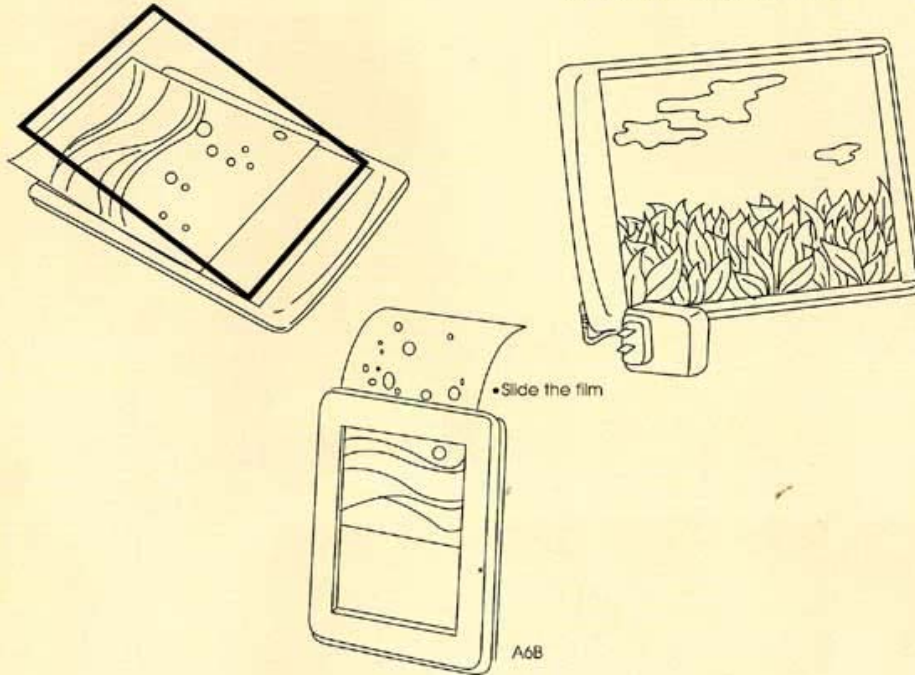
- Easy Graphic Change
- Even Brightness
- Elegant
- Battery Type Is Available
- Slim Profile (14mm)
- Quick Installation
- Low Power Consumption (12VDC)

AP2/AP3 Edge Light System with Plastic Frame

A5A/A6A/A6B Use Instruction

• Open the top cover and insert a transparency sheet, then assemble the cover in reverse way

• Adaptor for connecting AC to DC. The support or the links on the back for standing on the desk or hanging on the wall



Item No.	A5A	A6A	A6B
Viewing	Single Side Viewing	Single Side Viewing	Single Side Viewing
Body Size (m/m)	307x233x15	231x161x16	233x183x15
Viewing Area (m/m)	247x196	173x122	165x117
Weight (Kgs)	0.9	0.5	0.5
Consuming Power	2.5Wx2	2Wx1	2Wx1
Tube Size (CCFL)	ø2.6x260L	ø2.6x190L	ø2.6x190L
Avg. Life	20000 hrs	20000hrs	20000hrs
Adaptor	12VDC 600mA	12VDC 300mA	12VDC 300mA
Frame	Plastic	Plastic	Acrylic

• Custom colours are available.



icl International Components

Hixon Industrial Estate, Hixon, Stafford ST18 0PY Telephone: Weston (01889) 271135 Fax: (01889) 271183