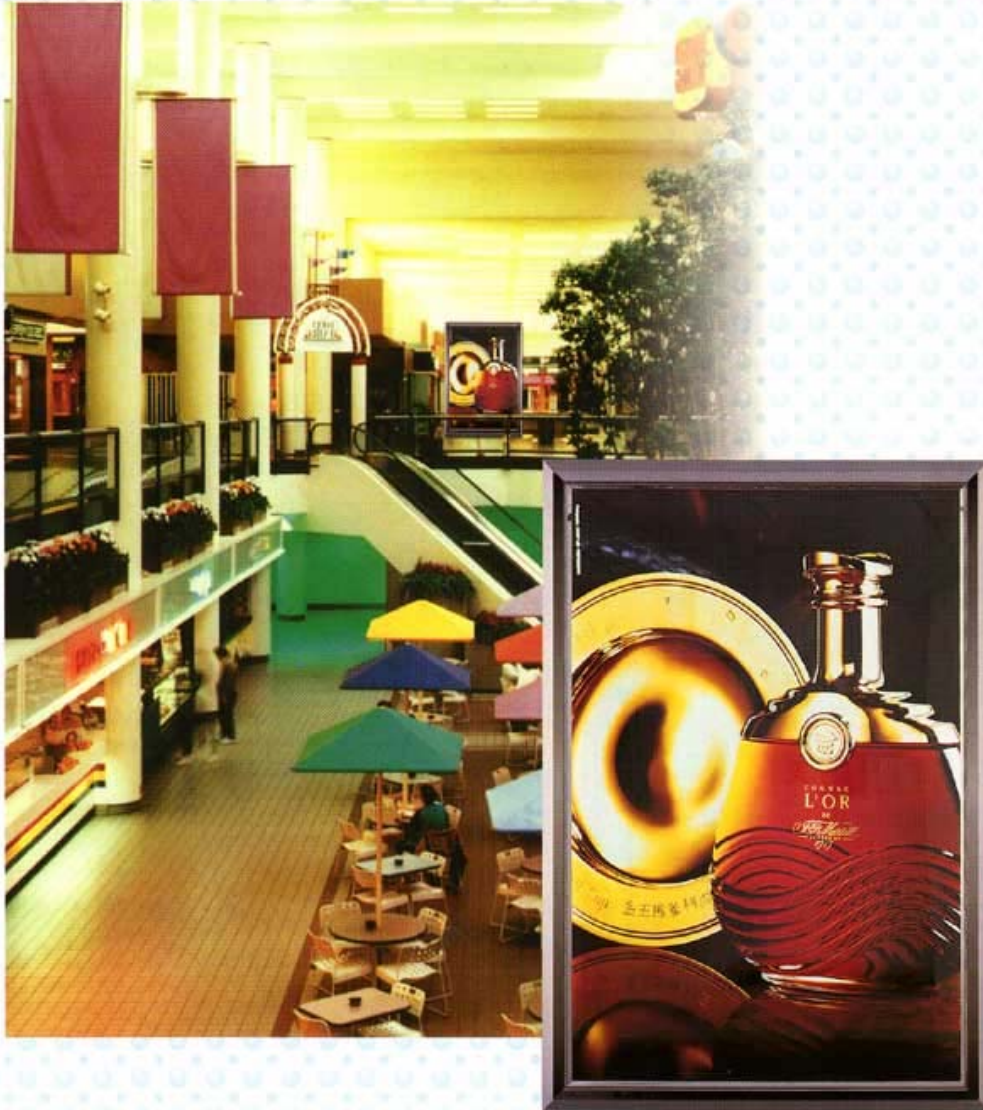


Edge Light Sign Board

The most effective advertisement display

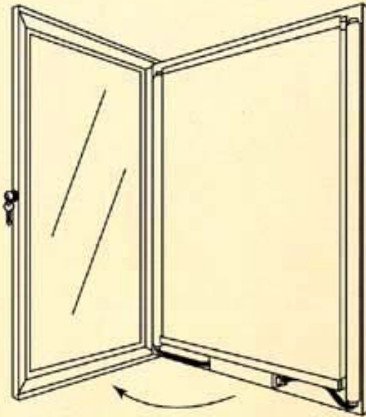
AS1 Type



- Stainless Frame with lock
- Even Brightness
- Elegant
- Slim Profile
- Quick Installation
- High Power Factor Electrical Ballast (98% PF)

AS1 Edge Light System with Stainless Steel Frame

Use Instruction



REPLACEMENT

Step 1: Switch the key
Step 2: Open top cover
Step 3: Replace the tube & film

Item No.	AS1-AA	AS1-A0
Viewing	Single Side Viewing	Double Side Viewing
Body Size (m/m)	1645x1139x52	1354x997x49
Viewing Area (m/m)	1493x987	1202x845
Weight (Kgs)	50.0	42.0
Consuming Power	58Wx2	40Wx2
Tube Size	ø26x1449L	ø29x1198L
Avg. Life	8000hrs	8000hrs

Item No.	A1	A2
Viewing	Single Side Viewing	Single Side Viewing
Body Size (m/m)	1050x748x52	750x563x49
Viewing Area (m/m)	898x596	598x411
Weight (Kgs)	14.0	7.4
Consuming Power	30Wx2	20Wx2
Tube Size	ø29x895L	ø29x580L
Avg. Life	8000hrs	8000hrs

- Custom sizes and colours are available.
- Wall mounted type.
- Maximum size is 3M x 1.1M (viewing area) for special customer requirement.



icl International Components

Hixon Industrial Estate, Hixon, Stafford ST18 0PY Telephone: Weston (01889) 271135 Fax: (01889) 271183